

Fire Season and Electricity Concerns

Information Packet

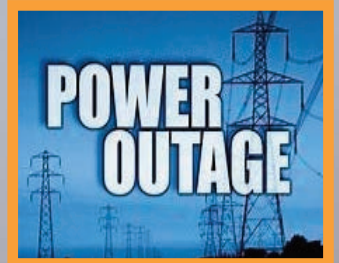
Power Shutoffs - Do You Have **Special** Medical Needs?

**PUBLIC SAFETY
POWER
SHUTOFF**



During a **Public Safety Power Shutoff (PSPS)**, SoCal Edison will shut off electricity in one or more of their circuit areas in Camarillo. A PSPS may be issued when the weather forecast could increase the probability for a fire; this may include high winds, low humidity, dry vegetation, or other conditions. Edison will provide notification to the public both 48 and 24 hours prior to a PSPS.

The purpose of a PSPS is to avoid fire damage to the Edison's infrastructure, and to reduce the threat of electrical lines igniting, or expanding an ongoing fire.



Edison recognizes that certain residents need continuous power for special medical needs. If you, or a loved one are in this situation, please call **800-655-4555**.



Please refer to the information on the following pages, which includes: requesting financial assistance from Edison for home medical equipment; the Edison circuit areas in Camarillo that are subject to a PSPS; and, information about backup power (generator) alternatives for electrical outages.

All residents are encouraged to visit www.sce.com/PSPS to update their contact information for Edison (or call the toll-free number above).

PSPS information, in English and Spanish, is also at:

English: <https://s29710.pcdn.co/wp-content/uploads/2019/09/77448-PSPS-Flyer-VCFD-R6-3.pdf>

Spanish: https://s29710.pcdn.co/wp-content/uploads/2019/09/77448-PSPS-Flyer-VCFD-R6_ESP-5.pdf

Table of Contents



Pg. 3	SC Edison Medical Baseline Assistance
--------------	---------------------------------------

Edison circuit areas in Camarillo that are subject to a PSPS:

Pg. 4	Clemson Circuit (area)
--------------	------------------------

Pg. 5	Crosson Circuit
--------------	-----------------

Pg. 6	Donlon Circuit
--------------	----------------

Pg. 7	Estaban Circuit
--------------	-----------------

Pg. 8	Evita Circuit
--------------	---------------

Pg. 9	Flynn Circuit
--------------	---------------

Pg. 10	Mugu Circuit
---------------	--------------

Pg. 11	Pancho Circuit
---------------	----------------

Pg. 12	Ponderosa Circuit
---------------	-------------------

Pg. 13	Redstone Circuit
---------------	------------------

Pg. 14	Riemann Circuit
---------------	-----------------

Pg. 15	Rosa Circuit
---------------	--------------

Pg. 16	Seminary Circuit
---------------	------------------

Information on Generators:

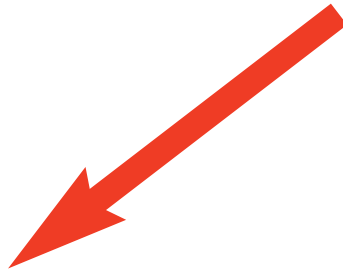
Pg. 17	Back-up Power for Electrical Outages
---------------	--------------------------------------

Pg. 18	How Much Backup Power is Needed?
---------------	----------------------------------

Pg. 19	Installation of (permanent) Generators
---------------	--



If you, or someone in your home has a medical condition that requires special equipment (and continuous power), you may qualify for Medical Baseline **financial assistance** from SoCal Edison.



Go to this section of the Edison website:

www.SCE.com/residential/assistance/medical-baseline

...and then

Alert: Get the Latest on Public Safety Power Shutoffs

[Learn More >](#)

Quick Services

Your Home

Demand Response

Rebates, Incentives & Saving Tips

Help Paying Your Bill

CARE/FERA Discounted Rates

One-Time Bill Assistance

Appliance Replacement Assistance

Medical Baseline Allowance

Home Efficiency Guide

Electric Vehicles

Generating Your Own Power

Rates

Medical Baseline Allowance

Home > Your Home > Help Paying Your Bill > **Medical Baseline Allowance**

Get Help with Medical Equipment

If you or someone in your household requires powered medical equipment, you may be eligible for Medical Baseline financial assistance. This program provides an additional 16.5 kWh per day to your normal baseline allocation.

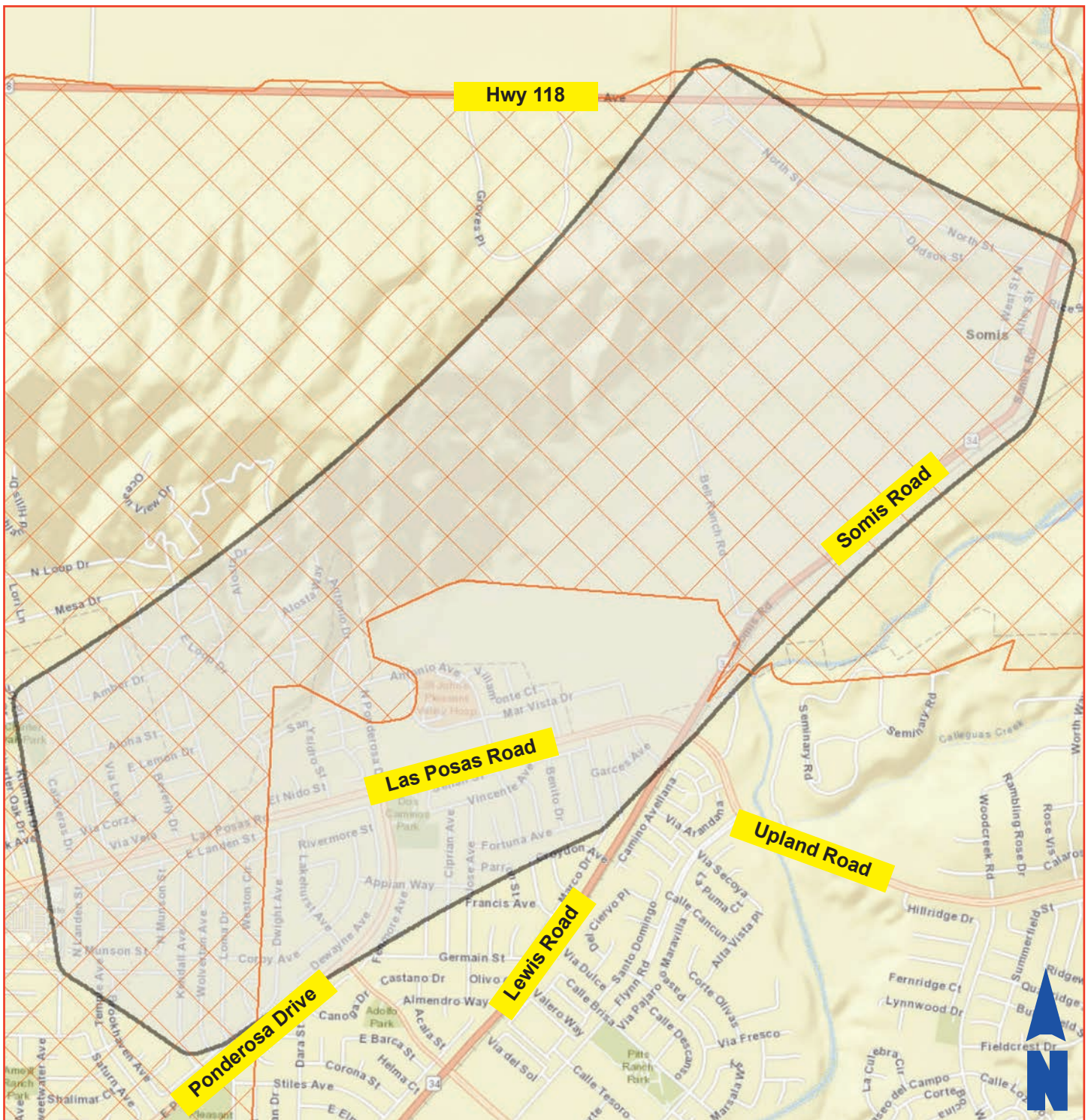
[Download the Application >](#)

The Application Process

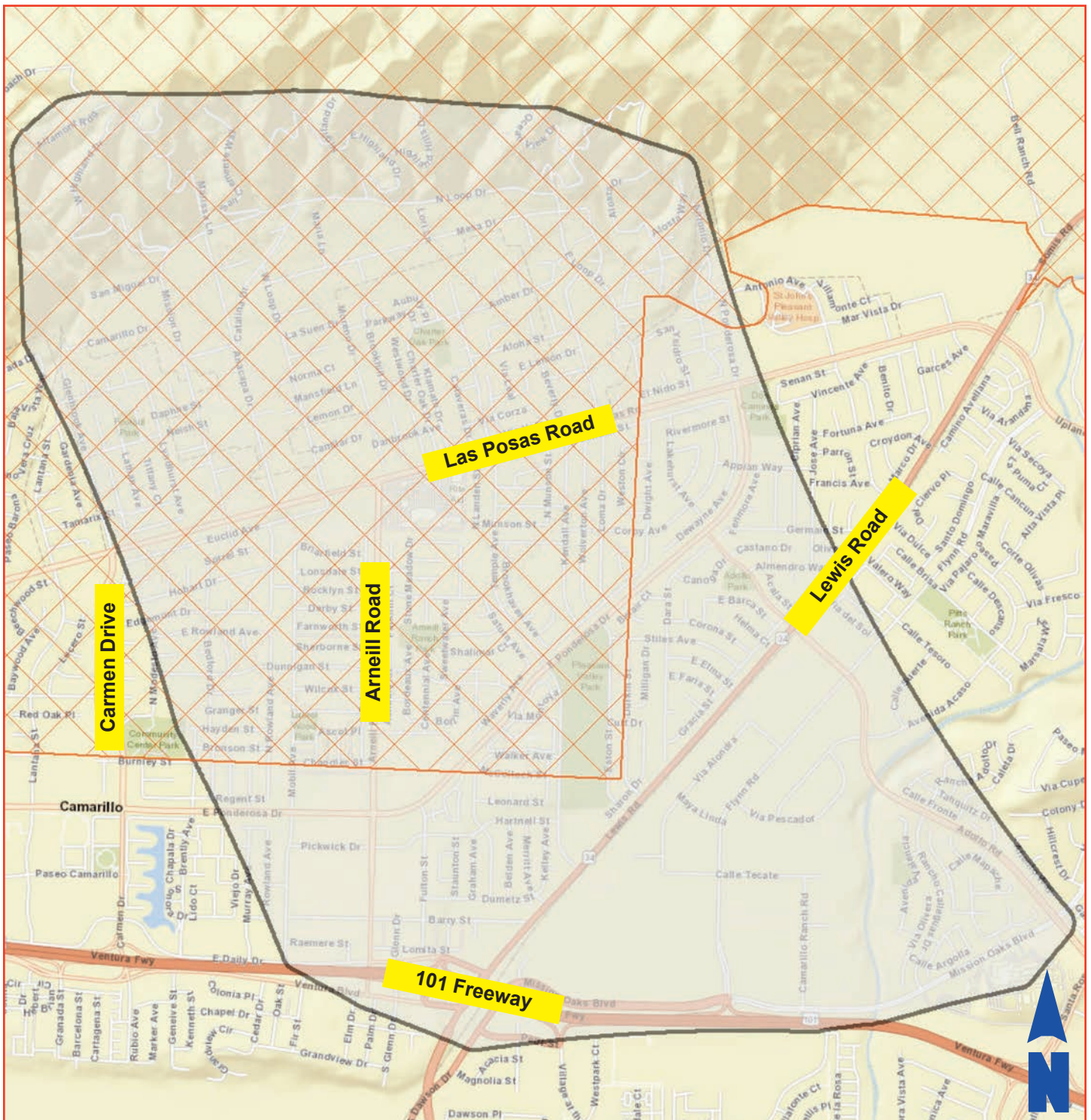
- 1. Find out if you qualify.**
To be eligible, you or someone who lives with you full-time must require use of a medical device.
- 2. Submit an application.**
Print the [Medical Baseline Application](#) and fill out Part 1.
- 3. Re-certify every 1 or 2 years.**
If a doctor certifies the medical condition is **permanent**, the customer must complete Part 1 of the application every two years to

As noted, a **Public Safety Power Shutoff (PSPS)** could interrupt electrical service to one or more Edison circuits in Camarillo. There are 13 circuit areas in Camarillo that are subject to PSPS; these are indicated (alphabetically) on the following pages.

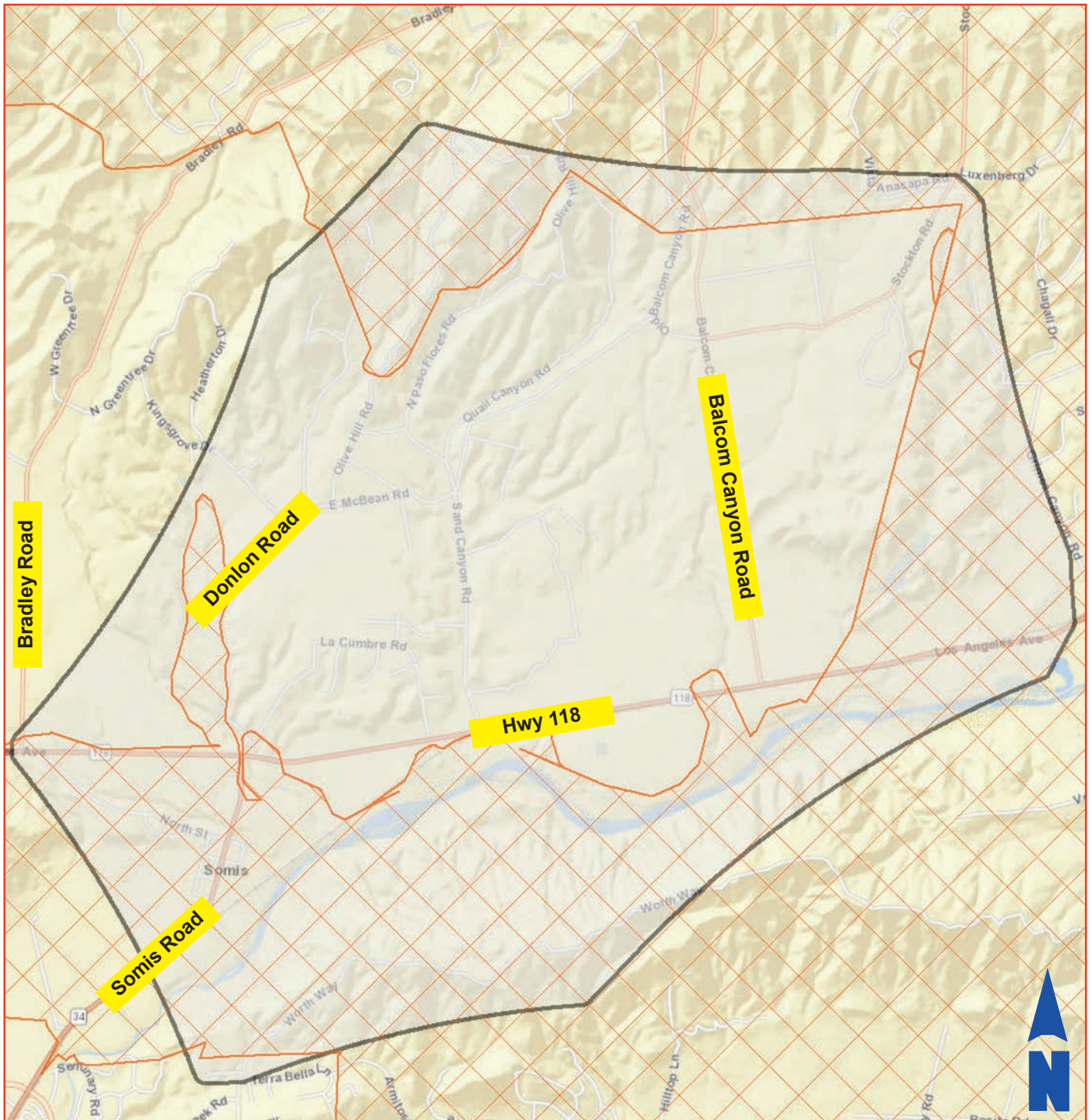
Clemson Circuit



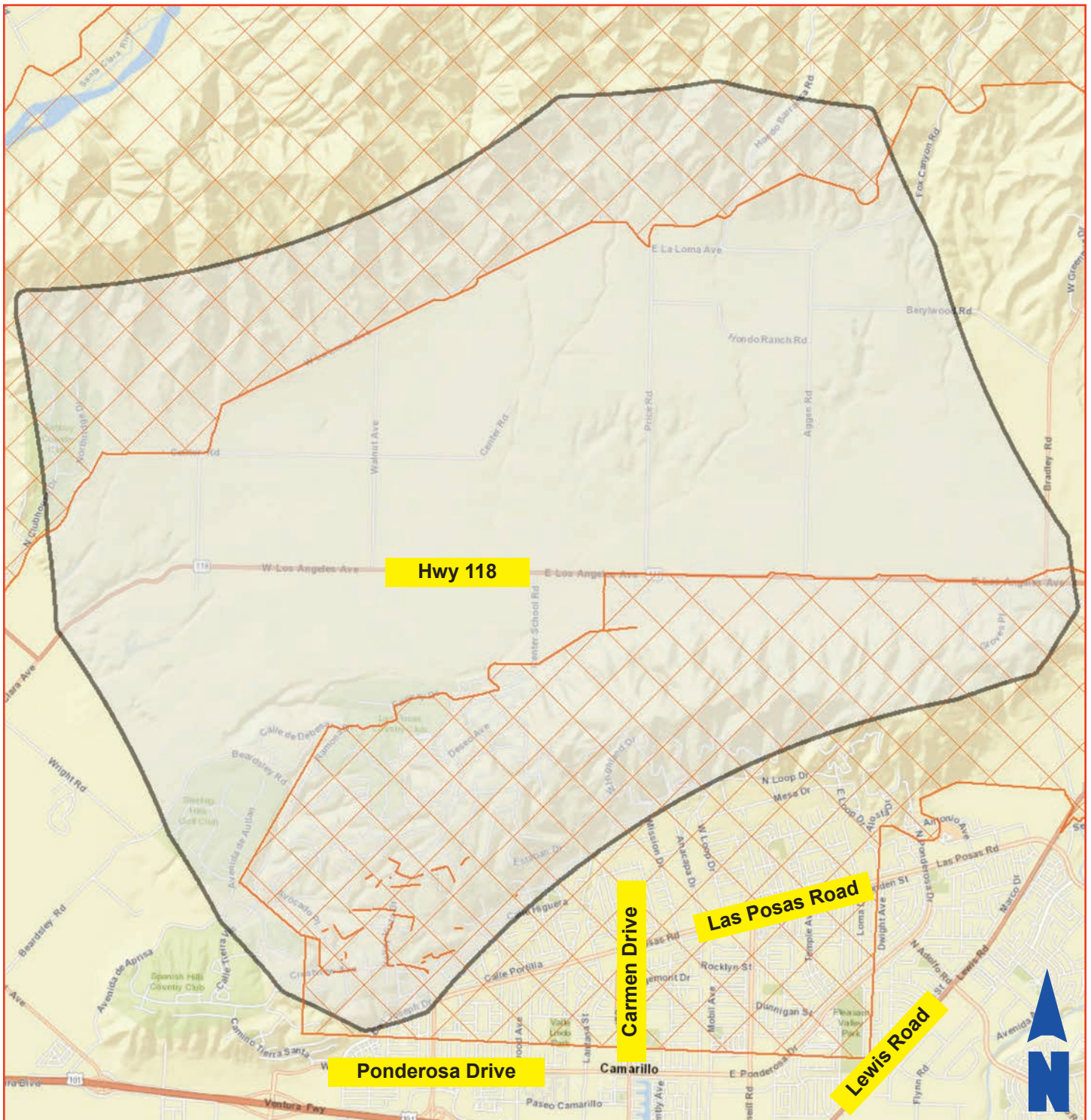
Crosson Circuit



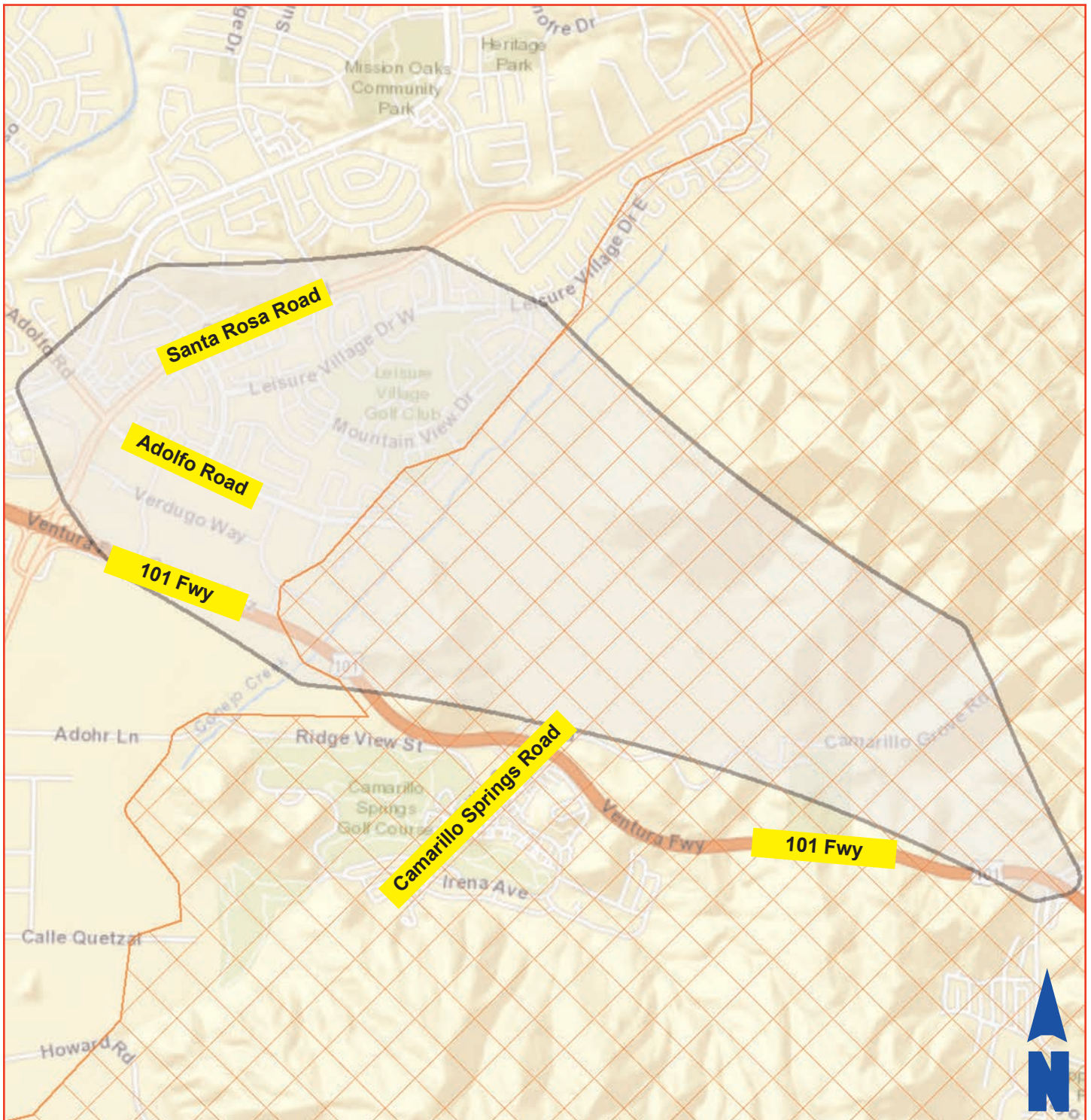
Donlon Circuit



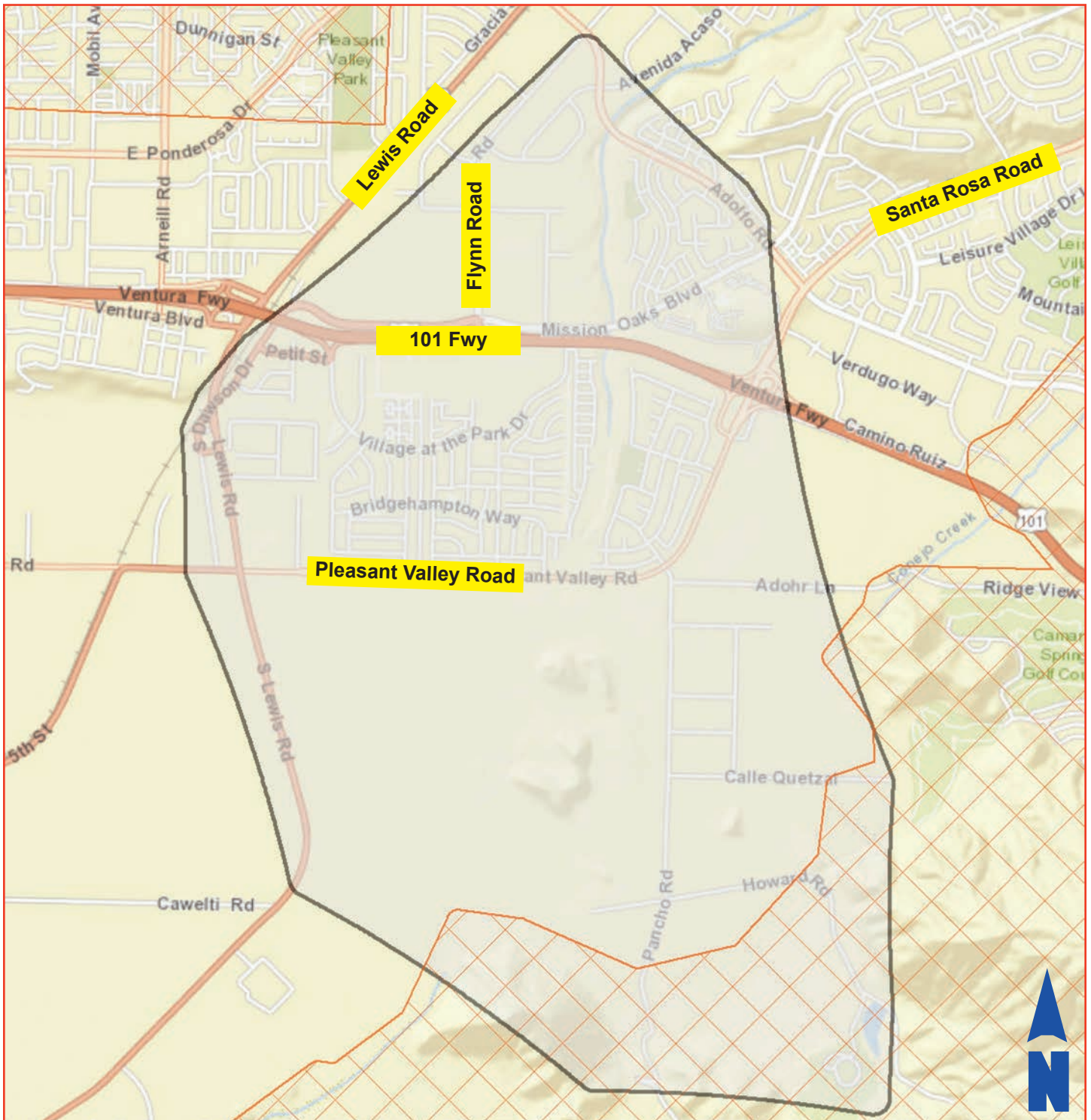
Estaban Circuit



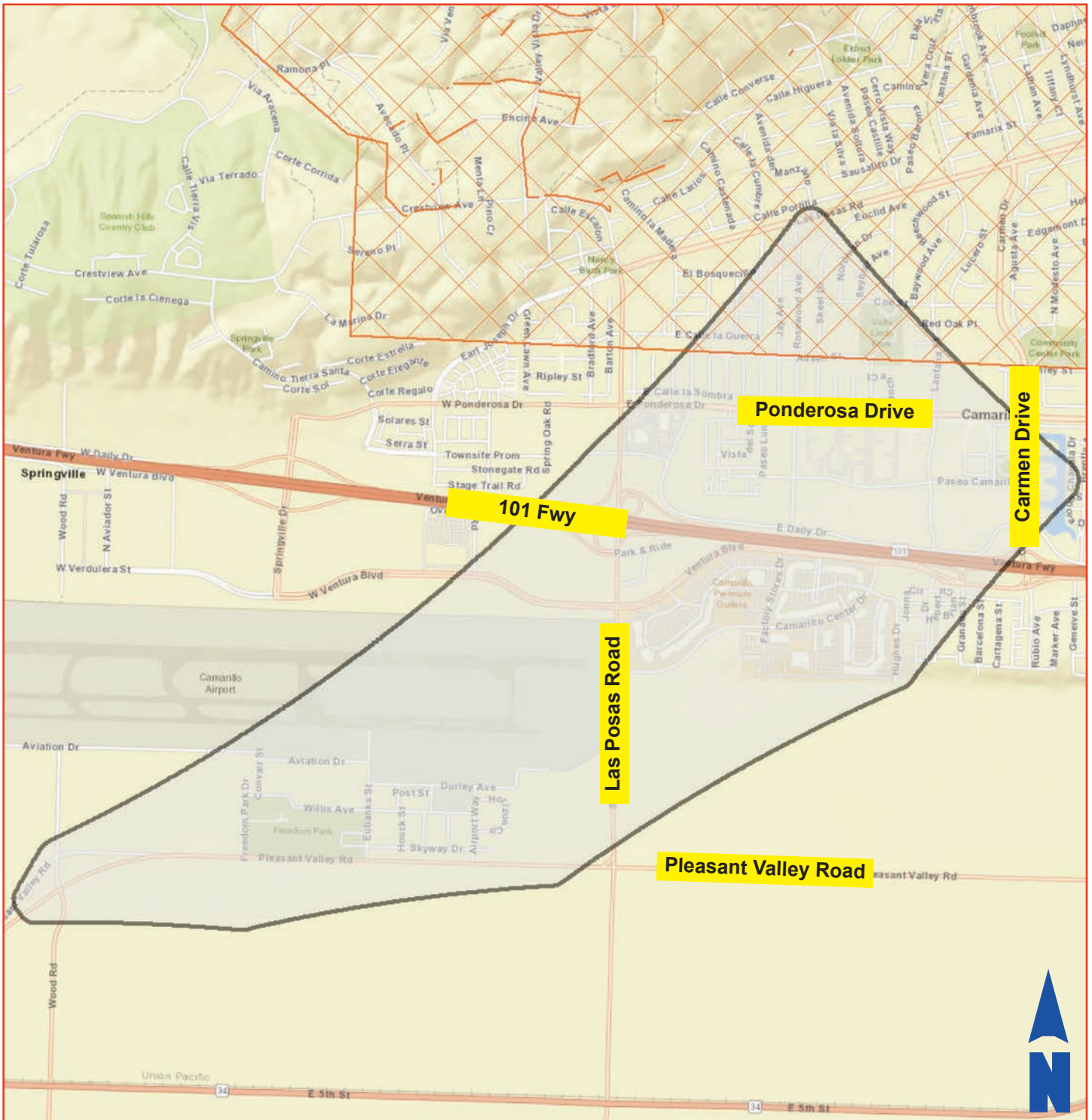
Evita Circuit



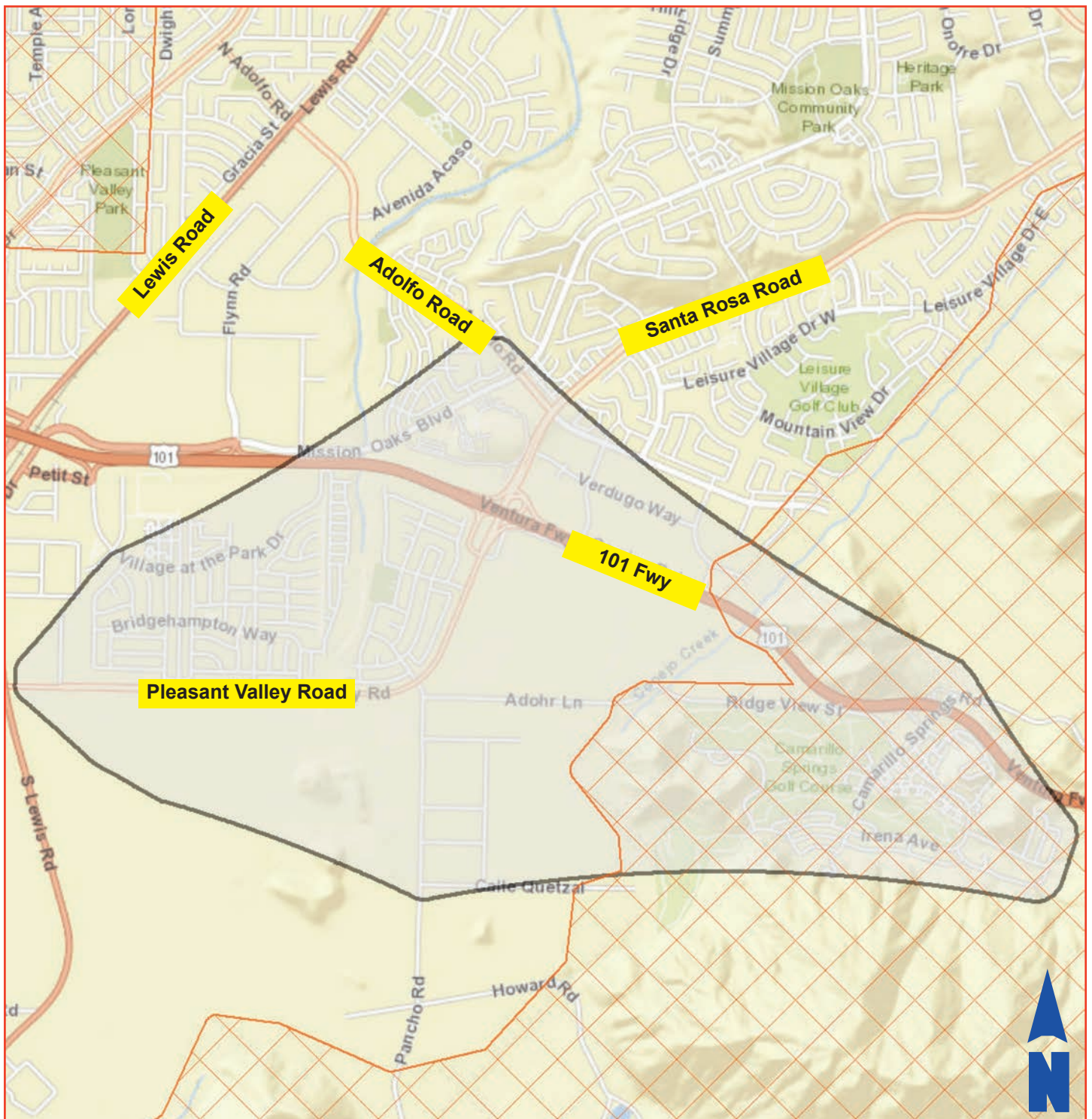
Flynn Circuit



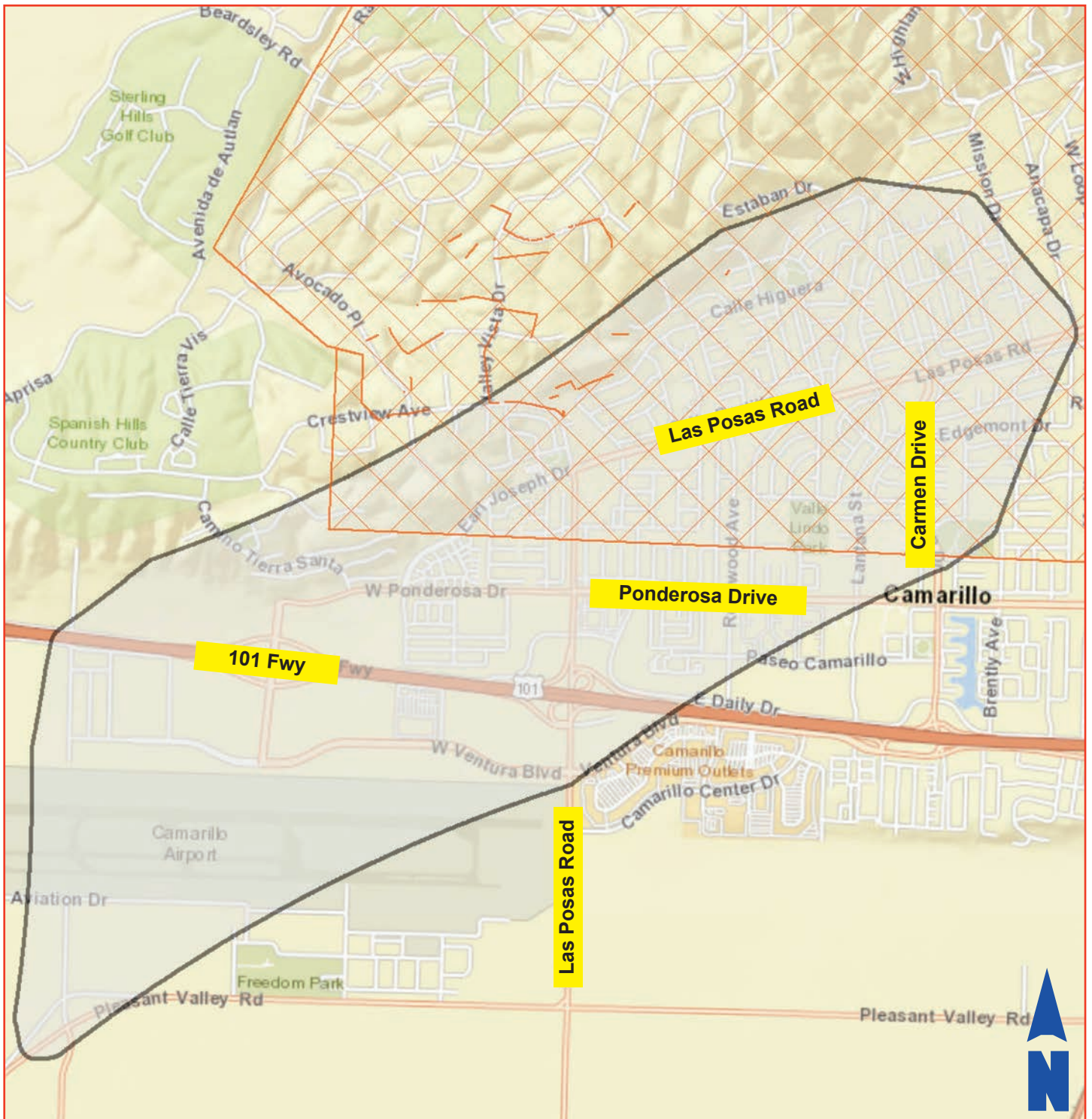
Mugu Circuit



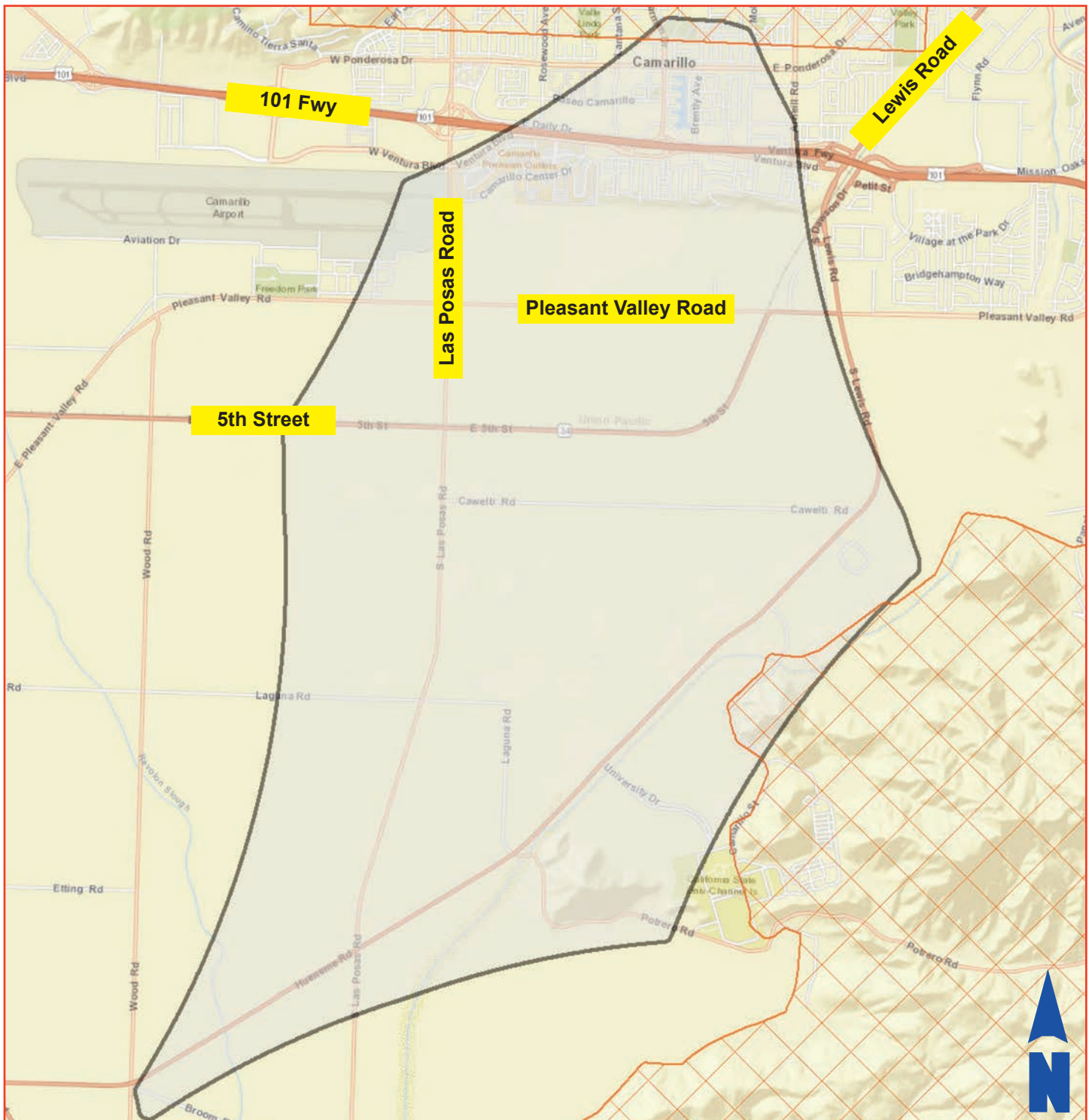
Pancho Circuit



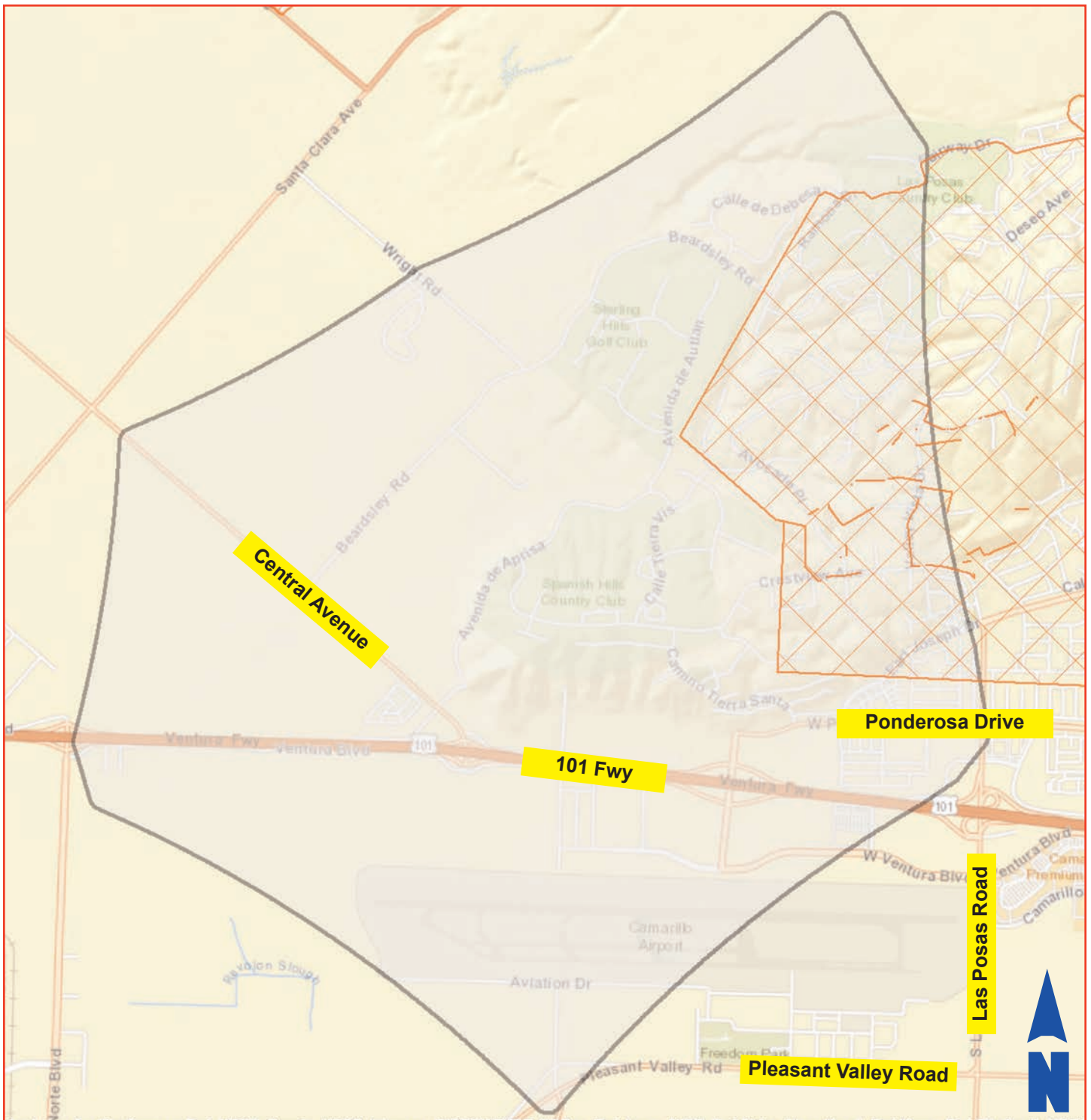
Ponderosa Circuit



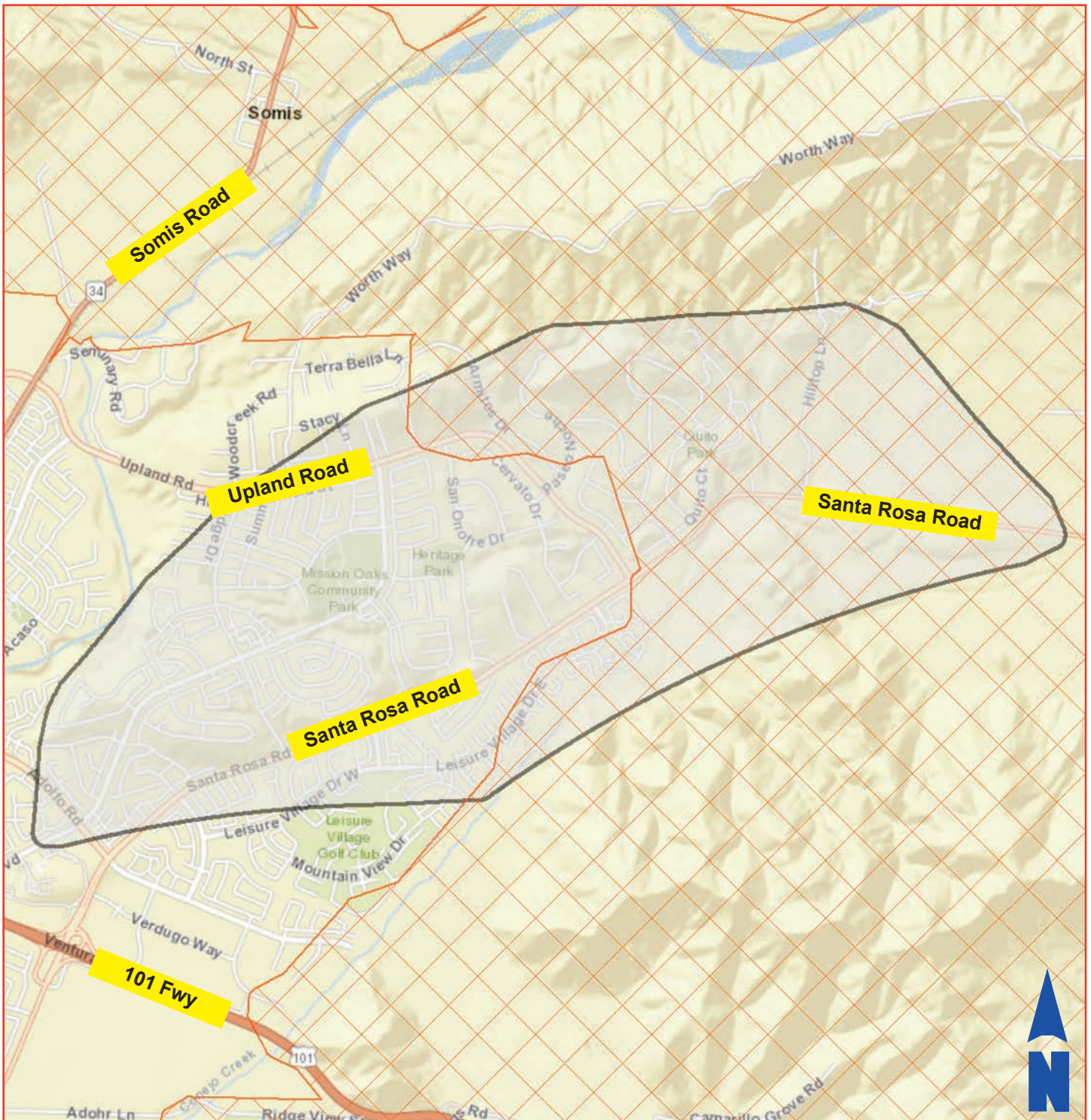
Redstone Circuit



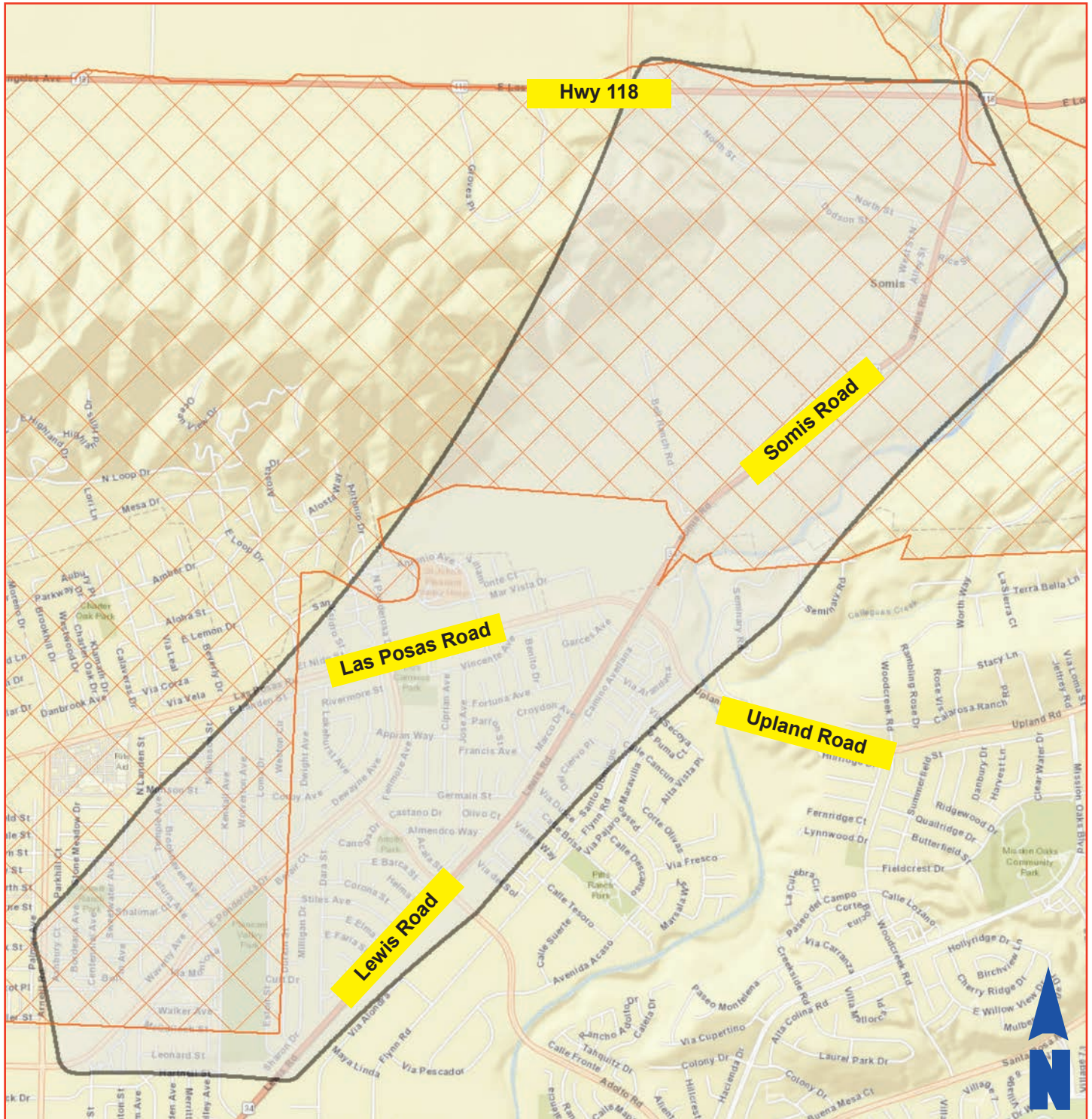
Reimann Circuit



Rosa Circuit



Seminary Circuit



Backup Power for Electrical Outages

The two primary types of Generators for back-up power needs: **Portable** and **Standby**.



Portable Generators

Most portable generators run on gasoline, though solar-powered generators are becoming more popular.

After the generator is started, extension cords can be plugged in to the unit's electric outlets to run appliances and electronics, or to power the home's electric subpanel. Most portable generators cost from \$500 to \$1,500, depending on the power output (watts).

Gas generators can be loud, while solar generators are quiet; however, gas units are available in more types, sizes, and power ranges. A solar generator can be kept charged either by connecting to a solar panel(s), or by plugging it into a home electrical outlet.



Gas Generators



Solar Generator and Panels

Standby Generators

Standby generators are larger units, and are installed (permanently) next to a home, in a rear or side yard. These generators usually run on natural gas or propane, and will start automatically at the onset of a power outage.

Whereas a portable generator can power a limited number of appliances or electronics, a standby generator can provide enough power for the typical electric needs of an entire home.



Standby Generator

Prices for standby generators can start at around \$5,000 for a 7,000-watt unit (the price may include installation).

How much Backup Power do you need?

Appliances and electronics in most homes can be powered by a generator with between 3,000 and 6,500 watts.

To estimate your household power needs, add up the wattages of all the appliances/electronics that you will need, and multiply the total number by 1.5. This multiplier is used because extra power is needed to start appliances. The total wattage determined should be considered the minimum power output for your generator.

Here are some typical power needs around the house:

Microwave 600 to 1,200 watts

TV 300 w

Refrigerator 700 to 1,200 w

Laptop 250 w

Freezer 500 to 1,200 w

Air Cond. (10K BTU) 1,500 w

Washing Machine 1,200 w



Where can Generators be purchased?

Home improvement stores like Home Depot, B&B Hardware, Lowe's, and other retailers either have generators in stock, or can order a specific model (and deliver it to your home).

Some **sporting goods** stores also sell generators, though these are usually smaller units that are used for camping.

Generators are also available through **online sources** like Wayfair.com, Amazon.com, and SamsClub.com, etc.

For **solar generators**, online sites include GoalZero.com, Grainger.com, and EarthTechProducts.com.



What about having a Generator Installed?

Home improvement retailers, including those noted on the previous page, can usually arrange for the installation of a standby generator at your home.

There are also generator installers that serve Camarillo. Similar to security alarm companies, some installers can monitor your generator from their office.

You can also speak to a generator installer about important power-related items, including surge protectors and uninterrupt power supply (UPS) units.



Some of the installers that serve Camarillo, include:

- **LT Generators** by phone [\(888\) 881-8121](tel:(888)881-8121) or www.LTgenerators.com
- **So Cal Generators** by phone [\(818\) 521-5543](tel:(818)521-5543) or www.SoCalGenerators.com
- **Pacific Energy Electric** by phone [\(805\) 482-3840](tel:(805)482-3840) or www.PacificEnergyElectric.com

Provided by



(805) 388-5349

www.CityofCamarillo.org