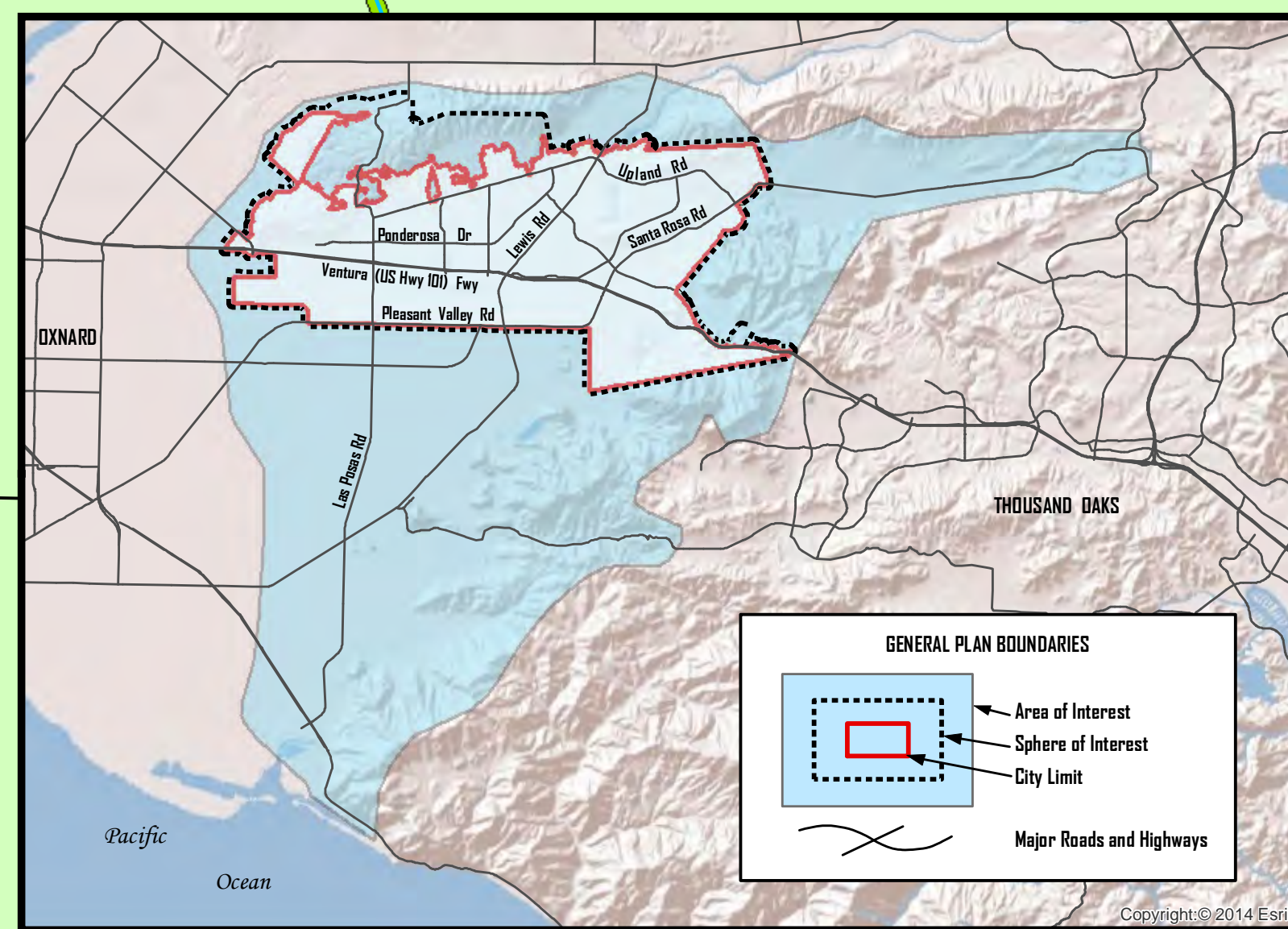
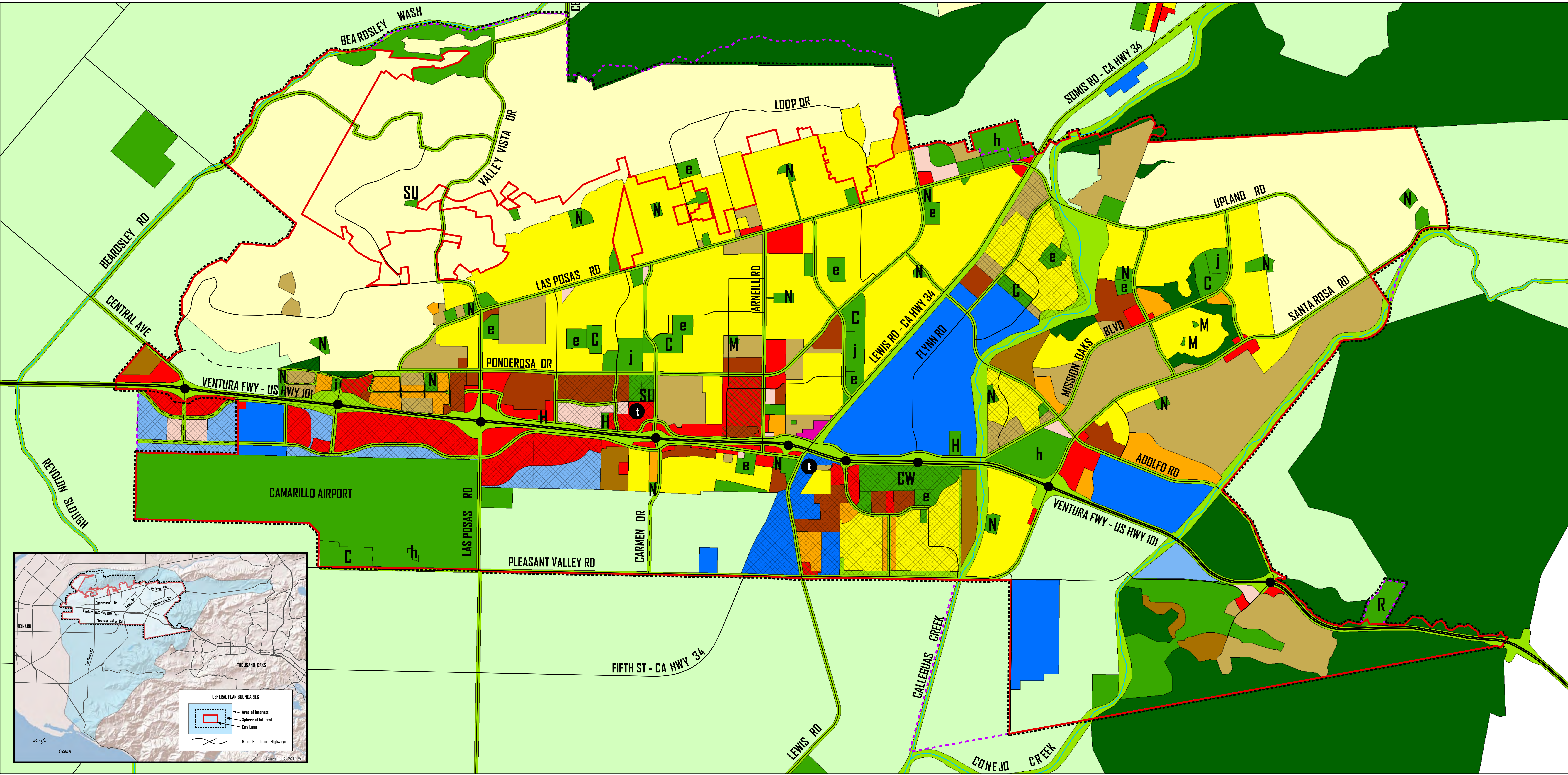


GENERAL PLAN



| RESIDENTIAL | |
|-------------|--|
| | RURAL DENSITY (2.5 D.U./ACRE MAX.) |
| | LOW DENSITY (5 D.U./ACRE MAX.) |
| | LOW-MEDIUM DENSITY (10 D.U./ACRE MAX.) |
| | MEDIUM DENSITY (18 D.U./ACRE MAX.) |
| | HIGH DENSITY (30 D.U./ACRE MAX.) |
| | MOBILE HOME (7 D.U./ACRE MAX.) |

| COMMERCIAL | |
|------------|----------------------|
| | GENERAL COMMERCIAL |
| | COMMERCIAL MIXED USE |
| | OFFICE |

| INDUSTRIAL | |
|------------|--------------------------|
| | INDUSTRIAL |
| | INDUSTRIAL/COMMERCIAL |
| | RESEARCH AND DEVELOPMENT |

| CONSERVATION | |
|--------------|--------------------|
| | AGRICULTURE |
| | NATURAL OPEN SPACE |
| | URBAN RESERVE |

| PUBLIC | EXISTING | PROPOSED | |
|--------|----------|----------|---|
| | | | PUBLIC |
| | | | MINI-PARK |
| | | | NEIGHBORHOOD PARK |
| | | | COMMUNITY PARK |
| | | | SPECIAL USE PARK |
| | | | CITY-WIDE PARK |
| | | | REGIONAL PARK |
| | | | SCHOOLS - ELEMENTARY, JUNIOR HIGH, HIGH |
| | | | QUASI-PUBLIC/UTILITY |
| | | | INSTITUTIONAL/SEMI-PUBLIC |
| | | | HISTORIC SITE |

| CIRCULATION | EXISTING | PROPOSED | |
|-------------|----------|----------|-----------------------------|
| | | | FREEWAY |
| | | | FREEWAY INTERCHANGE |
| | | | ARTERIAL / COLLECTOR |
| | | | LINKAGE (SPECIAL TREATMENT) |
| | | | WATERWAY |
| | | | TRANSIT CENTER |

| BOUNDARIES | |
|------------|--------------------------------------|
| | CITY LIMIT |
| | SPHERE OF INFLUENCE |
| | CAMARILLO URBAN RESTRICTION BOUNDARY |
| | SPECIFIC PLAN AREA |

SCALE 0 1,200 2,400 3,600 Feet
 City of Camarillo
 Department of
 Community Development